

**EC-JET**

Stock Code : 835766



**EC-JET2000 Ink Jet Printer**

# PHARMAPACK

Guangzhou EC-PACK Packaging Equipment Co.,Ltd

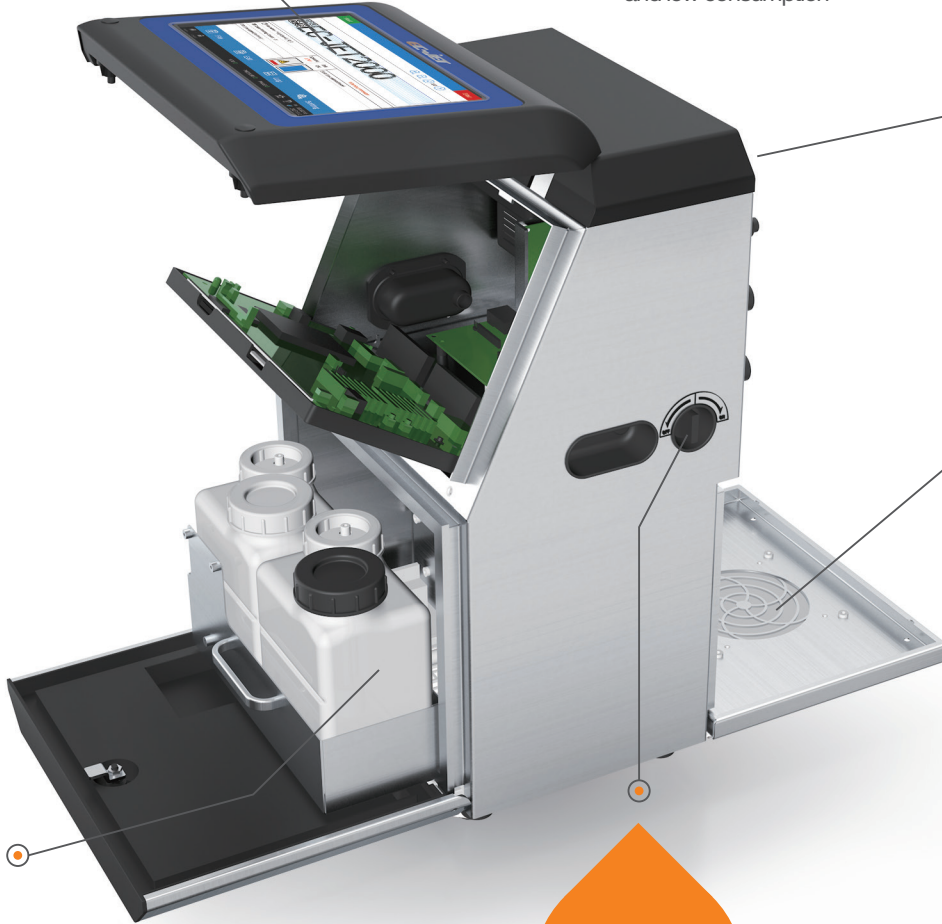
◆ **EC-JET Coding And Marking Series**

**Color Screen**

- Vertical cabinet with 10.1 inches color touch screen, Simple interface and easy operation
- Curved and plastic screen, sealed design IP55 Protection level

**Independent Cooling**

- Cabinet inside with fans, Independent cooling, less heating up Aluminium castings on the top of cabinet Anti-dust and low consumption



**Fast Maintenance**

- Ink separate with electronic system, making maintenance easier and safer.
- Start the fast maintenance mode when printer has failure Or contact manufacturer for maintenance

**One-button start Automatic Outage**

- One-button shutdown, automatic outage
- Normal startup after abnormal shutdown
- Jet off after accident outage, No pollute to the products



**Unique Three-door Design**

Maintenance door, consumable door and electronic door



**New Ink System**

Reduce electromagnetic interference, low consumption



**Automatic Cleaning System**

Automatic print head cleaning feature ensures normal startup after prolong shutdown period



### Safe And Reliable

Completely new printhead design ensures safety and convenience



### Stable Performance

Stable jet  
Adapt to the moving /dynamic printhead applications



### Simple And Generous

Pretty appearance  
stable structure





### Economical Environmental And Cost-effective

Ultra high speed at 380 meters per minute (1246ft per minute)  
High efficiency saves up to 20% on operating costs



### Fast Editing

Support fast on-line editing switching, and previewing print data



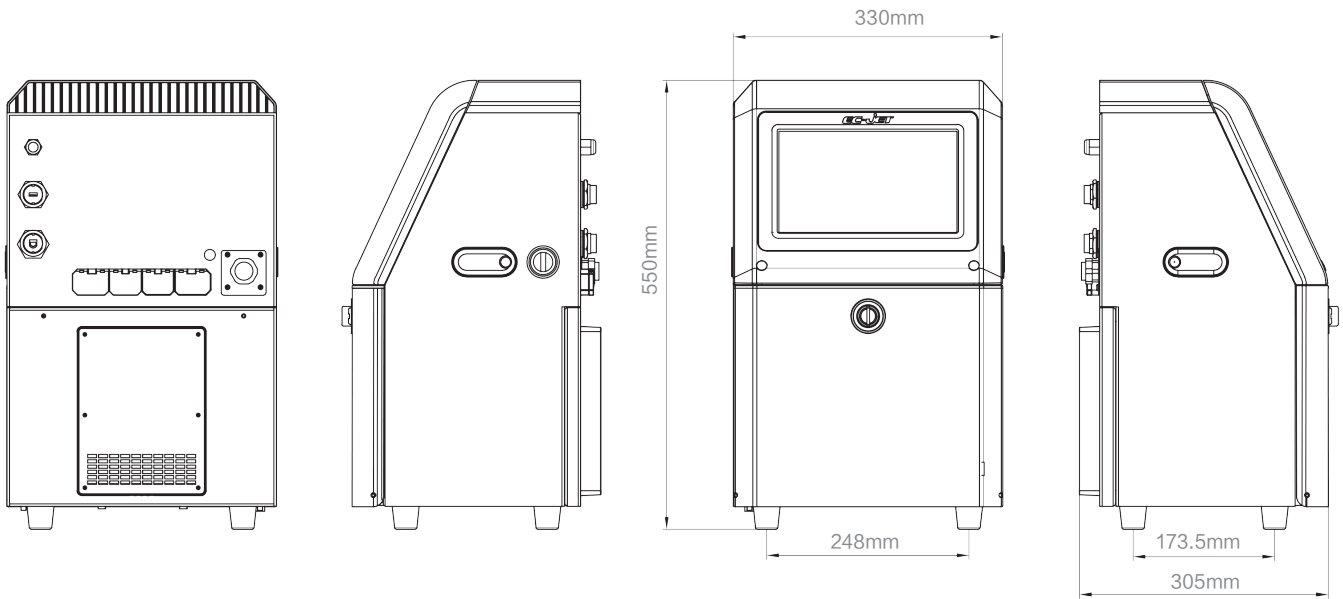
### Barcode Printing

1D barcode and 2D barcode printing capability  
On-screen logo creation and editing

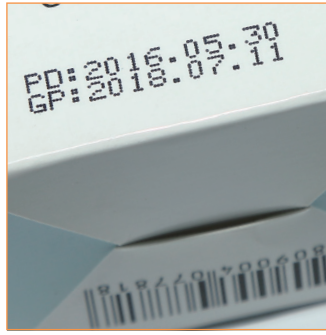
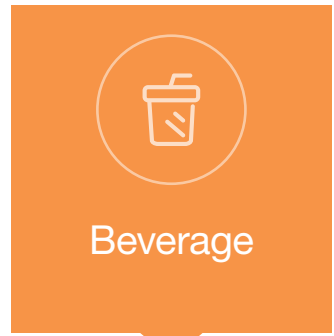
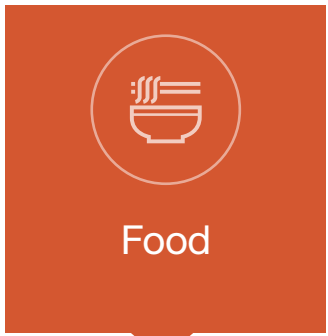
## Other Features And Functions

- Character bolding horizontally and vertically
- Dot bolding
- New print controls provide enhanced print quality and capabilities
- Recycle detects automatically, easy to find out the jet offset in time
- Flexible automatic date and time format

# Product Dimensions



# Photos of Application



# Excellent EC-JET, Intelligent Choice

Product Model	EC-JET2000
Maximum print speed (single line)	380 meters/min
Character	90°、180°、270° revolve available
Data memory capacity	Maximum 4GB
Message height	34 dots (Max)
Print line	1-4 lines
Graphic format	BMP/PNG/JPG
Text type	Fixed text, serial number, date, counter, shift code random code, 1D bar code, 2D bar code
Max Message capability	2048 characters (7X5 dots)
High precision screen	10.1 inches color high precision touch screen
Operation system	EC-JET self-developed "SEQ" operation system
Standard interface	Ethernet / Shaft encoder Interface, Photocell/Shaft Encoder interface, External Alarm interface, USB, Ethernet interface, RS-232 communication interface
Appearance	Industrial-grade stainless steel cabinet
Controller installation	desktop
Operating temperature	5-45°C
Relative humidity (no condensation)	10-90%
Protection grade	IP55
Power	100-240V AC50/60HZ

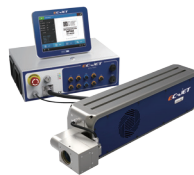
\*\*Please consult EC-JET for more information.



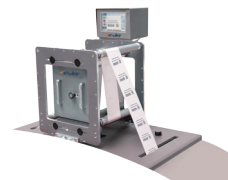
High-resolution Printer



Large Character Ink-jet Printer



Laser Coding System



Thermal Transfer Printer



Consumable



## GUANGZHOU EC-PACK PACKAGING EQUIPMENT CO.,LTD.

Address: No.16 Huang Qi Shan Road, Yong He Economic Zone, GETDD, Guangzhou, China.  
Tel: +86-20-82209518 Fax: +86-20-82209511  
<http://www.ec-jet.com>  
E-mail: [market@ec-jet.com](mailto:market@ec-jet.com)

## Pharmapack Technologies Corporation

Address: No.16 Huang Qi Shan Road, Yong He Economic Zone, GETDD, Guangzhou, China.  
Tel: +86-20-82215907 Fax: +86-20-82213367  
<http://www.pppharmapack.com>  
E-mail: [market@pppharmapack.com](mailto:market@pppharmapack.com)

### Pharmapack North America

Address: 5095 East Airport Drive  
City of Ontario, CA 91761, USA  
Tel: +1 909 390 1888  
Fax: +1 909 390 5388

### Pharmapack Europe

Address: Via Molino Rosso 10F  
40026 Imola(BO) Italy  
Tel: +39 0542 1890315  
Fax: +39 0542 1890314

### Pharmapack Packaging Equipment CO.India Pvt.Ltd.

Address: 206, 2nd Floor Srinivasa Tower,  
Adjacent Hotel ITC Kakatiya,  
Hyderabad - 500016, Telangana